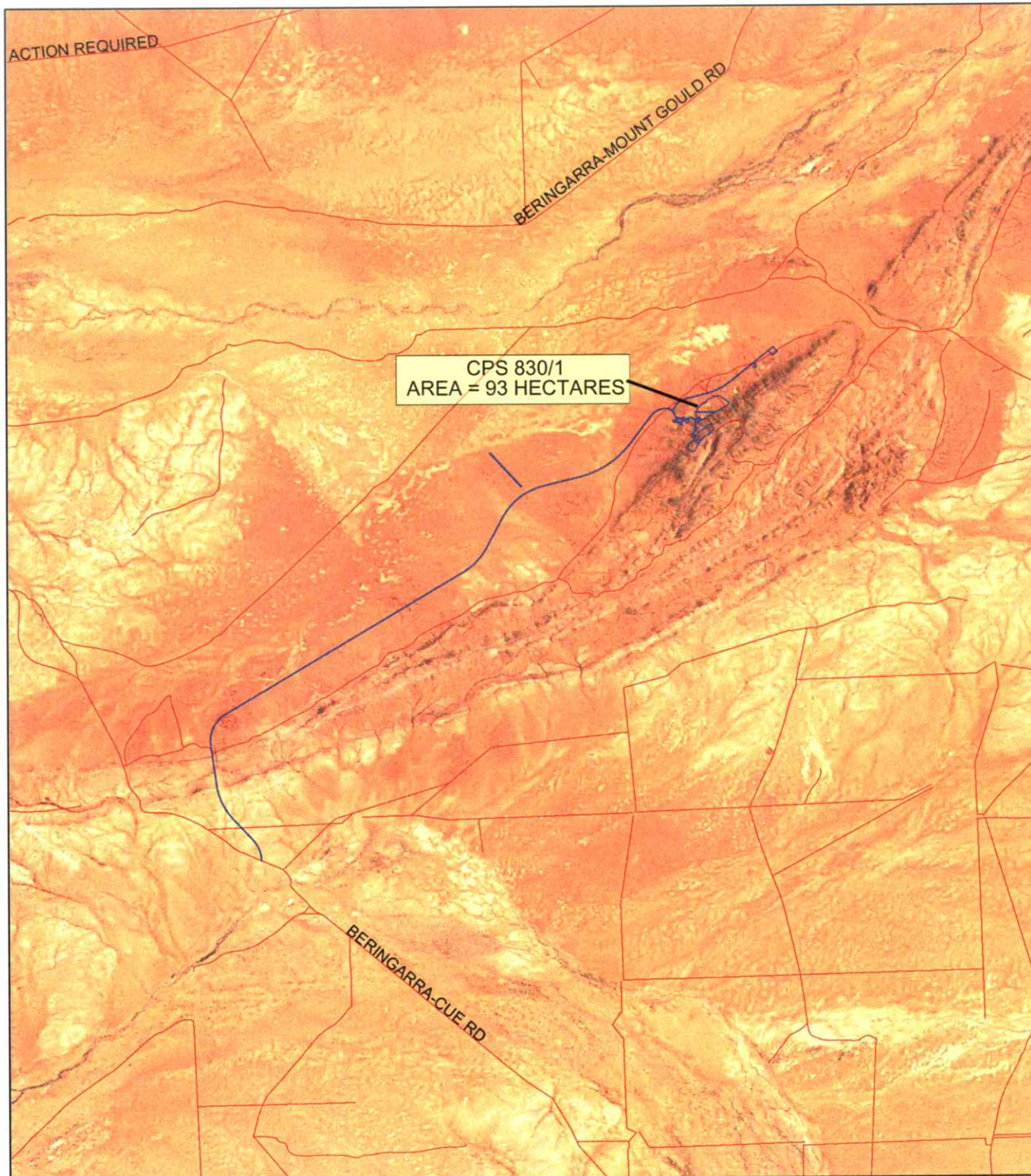


# CPS 830/1



## LEGEND

⚡ Road Centrelines - DLI  
1/5/04

□ Cadastre - DLI 1/09/05  
Clearing Instruments

▭ Areas Applied to Clear  
(cont)

▭ Areas Subject to Conditions  
▭ Areas Approved to Clear

Western Australia ETM 25m  
543 - AGO 04



Scale 1:189486

(Approximate when reproduced at A4)

Geocentric Datum Australia 1994

*Note: the data in this map have not been projected. This may result in geometric distortion or measurement inaccuracies.*

Prepared by: MIENVRM

Prepared for:

Date: 18/11/2005 8:31:11 AM

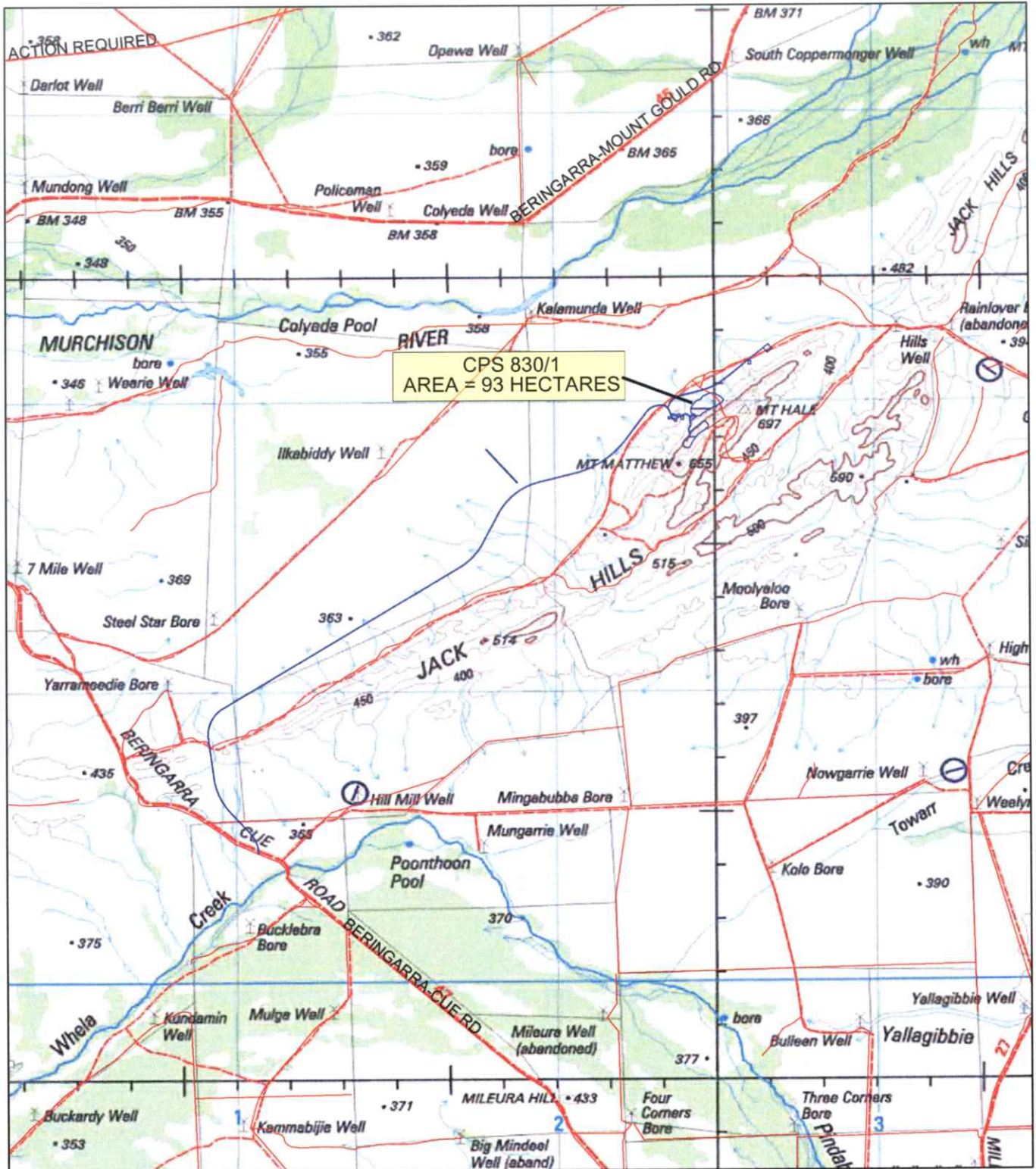
Information derived from this map should be confirmed with the data custodian acknowledged by the agency acronym in the legend.




Department of  
Environment

WA Crown Copyright 2002

# CPS 830/1



## LEGEND

-  Road Centrelines - DLI 1/5/04
-  Areas Subject to Conditions
-  Areas Approved to Clear
-  Cadastre - DLI 1/09/05
-  NATMAP 250K Series Mapping - GA 08/03
-  Clearing Instruments
-  Areas Applied to Clear (cont)



0 ————— 5 km

Scale 1:189486

(Approximate when reproduced at A4)

Geocentric Datum Australia 1994

Note: the data in this map have not been projected. This may result in geometric distortion or measurement inaccuracies.

Prepared by: MIENVRM

Prepared for:

Date: 18/11/2005 8:29:29 AM

Information derived from this map should be confirmed with the data custodian acknowledged by the agency acronym in the legend.



Department of Environment

WA Crown Copyright 2002